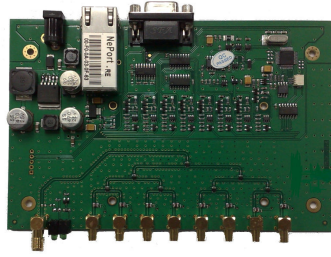
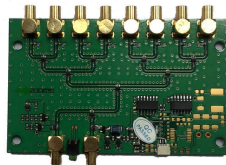


UHF RFID Antenna MUX Master / Slave



▼ Specifications		
Model (Order Code)	evo – Mux M	
Physical Characteristics	Dimensions	200(L)*105(W)*28(H) mm
	Weight	500g
Environment	Operating Temp	-10°C to 55°C (14°F to 131°F)
	Storage Temp	-20°C to 80°C (-4°F to 176°F)
	Humidity	10% to 95%
	Non-condensing Enclosure	IP-40
RF Output Port	8 MCX (Female)	
RF Input Port	1 SMA (Female)	
Power	12V2A DC	
Frequency Ranges	860-960 MHz	
RF power control	33dBm	
Communication Interface	1 RS232 and 1 RJ45	
RS232 Baud rate	38400	
RJ45	10/100M	



▼ Specifications		
Model (Order Code)	evo – Mux S	
Physical Characteristics	Dimensions	106(L)*60(W)*20(H) mm
	Weight	300g
Environment	Operating Temp	-10°C to 55°C (14°F to 131°F)
	Storage Temp	-20°C to 80°C (-4°F to 176°F)
	Humidity	10% to 95%
	Non-condensing Enclosure	IP-40
RF Output Port	8 MCX (Female)	
RF Input Port	1 MCX (Female)	
RF Uplink Input Port	1MCX(Female)	
Frequency Ranges	860-960MHz	
RF power control	33dBm	