

PROXIMITY

- Module



Measuring only 38mm x 45mm, the reader module is ideal for battery operated handheld readers, mobile devices and printers. With a standard RS232 cable plus a USB connector, it is a ready “plug and play” product for desktop solution. The module also comes in RS422 and RS485 interfaces. It supports ISO15693 tags such as I-Code, Tag-it, My-D, Pico, etc.

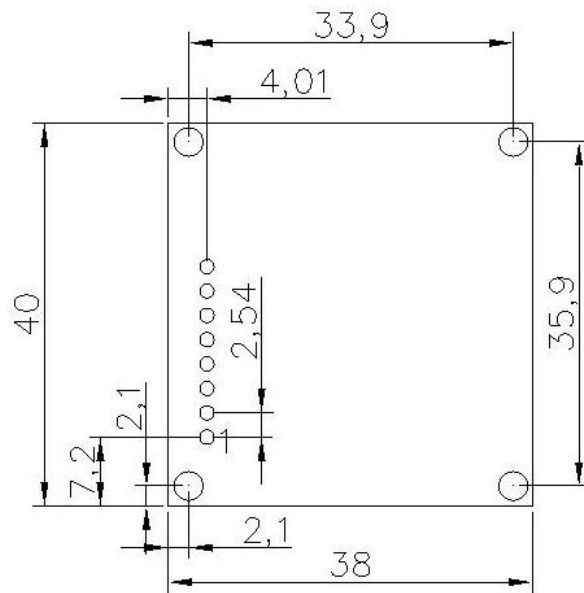
Applications

- Access control, Hand-held terminals, Parking meters, Printers, Etc.

Specifications

Model	Reader Module
Standard	ISO/IEC 15693 (optional ISO14443 Type A/B)
Operating Frequency	13.56MHz
Baud rate	9600-115200 Kbit/s (default 9600)
Supply Voltage	DC 5V (±5%)
Consumption Current	<100mA (20mA stand by mode)
Operating distance	120 mm (antenna and transponder dependent)
Interface	RS232 (standard) RS485/RS422 (optional)
Operating temperature	-10°C ~ +70°C
Storage temperature	-20°C ~ +80°C
Humidity	0 ~ 95% relative humidity non-condensing
Indicators	LED and buzzer (optional)
Matching antennas	20mm x 40mm, 49mm x 59mm, 70mm x 90mm and more





Dimension (face to pin)

PIN Function

PIN Number	Indication	description
1	RXB	Data in RS422
2	RXA	Data in RS422
3	TXB	Data out RS422/Data in RS232 //Data B RS485
4	TXA	Data out RS422/Data out RS232 //Data A RS485
5	GND	Power ground
6	VCC	Power +5v